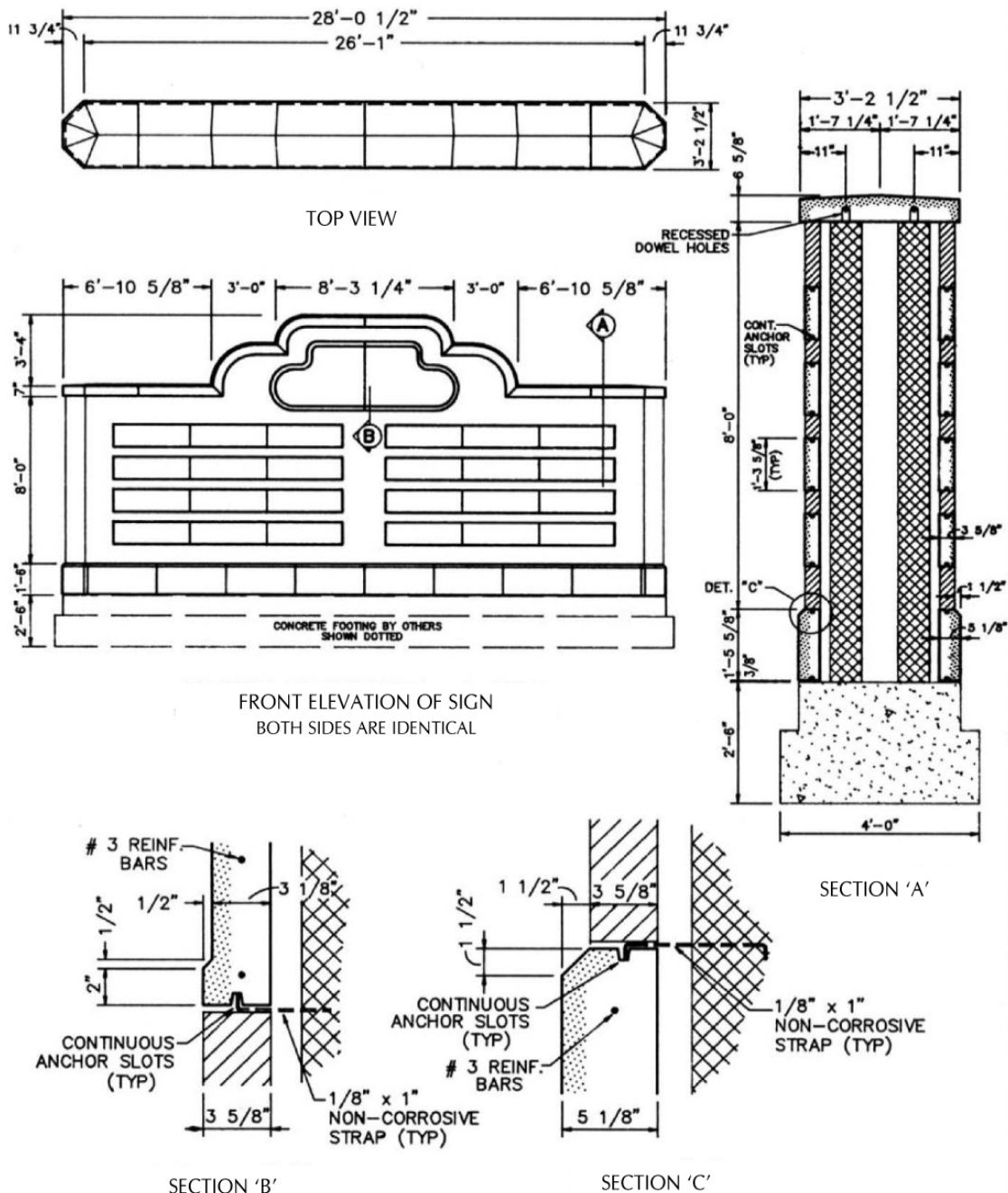


**PROJECT: SIGNS AT MARSHALLS
ARCHITECT: O'BRIEN O'BRIEN
PLANTATIONS, FLA - PLATE #6**

The Cast Stone and brick signs at The Fountains Shopping Mall in Plantations, Florida were an after-thought to the project. Instead of using contrasting materials for project identification, the materials utilized on the buildings were employed for the signs: buff-grey Cast Stone and brown brick.

The design lends itself to Cast Stone treatment because there was more than one sign required. The attachment of brass lettering to the Cast Stone banding not only created a highly visual element, but it also carried the refined architectural treatment from the buildings to the street.



This Technical Bulletin is provided by the Cast Stone Institute®, and is intended for guidance only. Specific details should be obtained from the manufacturer or supplier of the Cast Stone units.