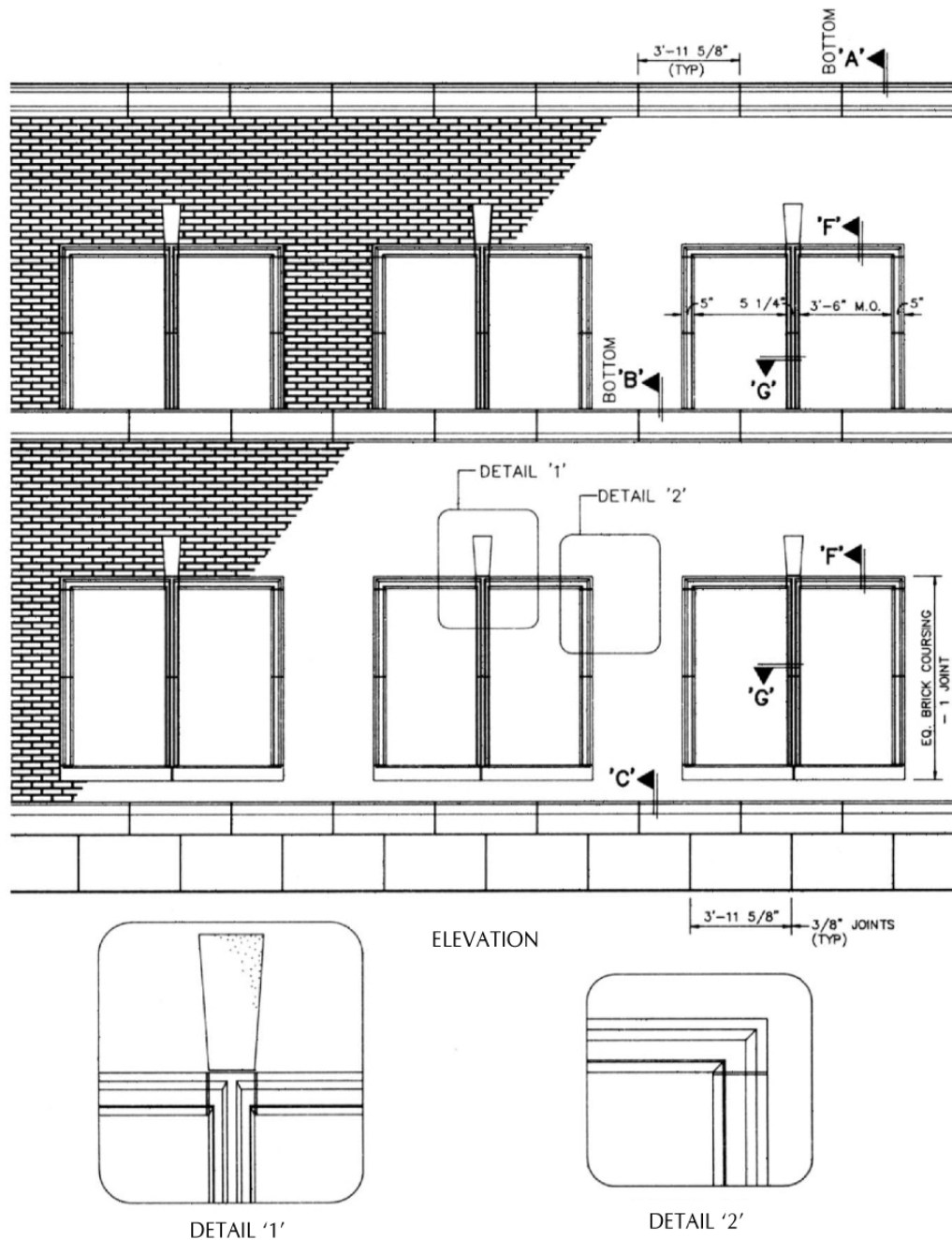


**PROJECT: PARK CITIES BAPTIST CHURCH
ARCHITECT: F&S PARTNERS, INC.
DALLAS, TX - PLATE #3**

As with nearly any custom product which requires initial tooling prior to fabrication, a great deal of economy can be achieved by taking advantage of repetition.

Note the way the architect has logically re-used the bottom portions of sections A & B employed on the North elevation (Plate #1) and carried the profile through to another use on the South elevation (Plate #3).

Careful consideration of the effects of brick coursing has afforded the Owner a considerable cost savings in this example.



This Technical Bulletin is provided by the Cast Stone Institute®, and is intended for guidance only. Specific details should be obtained from the manufacturer or supplier of the Cast Stone units.