

MOLECULAR BIOLOGY BUILDING
PRINCETON UNIVERSITY - PLATE #20

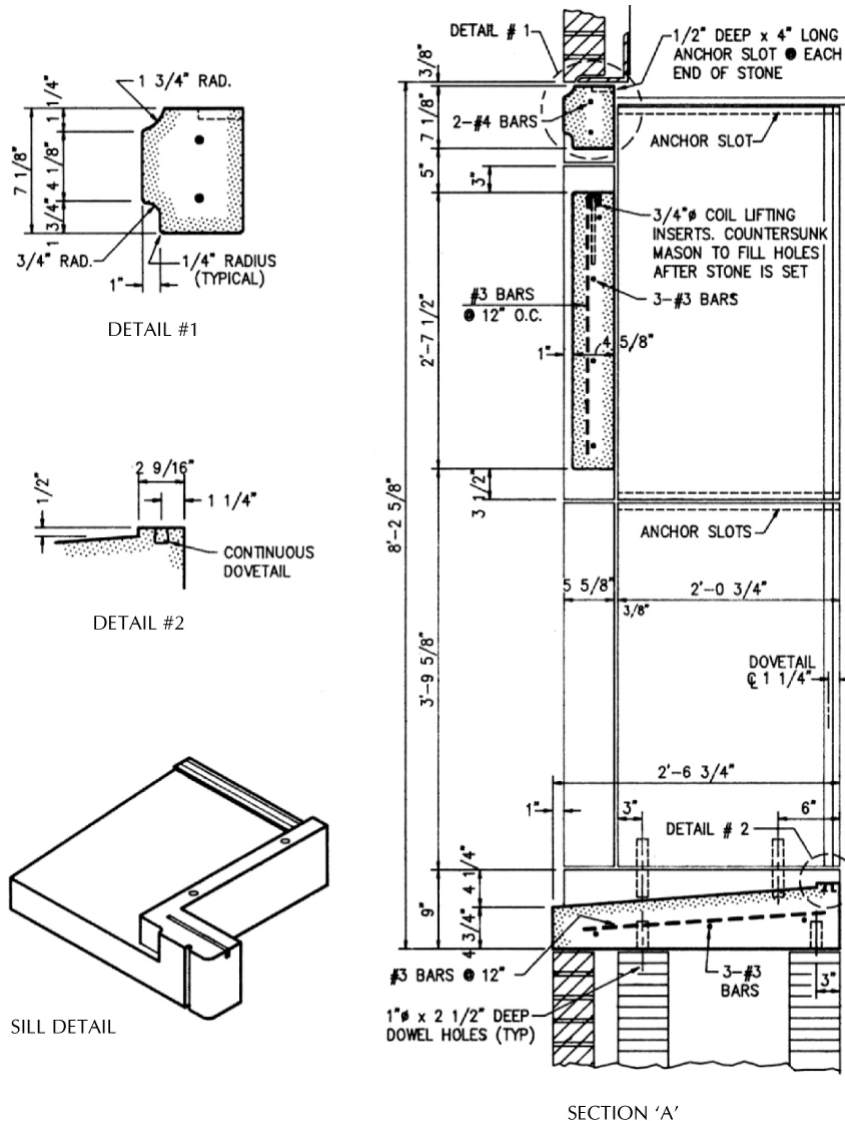
Normally the unformed or back side of Cast Stone is made with a trowel or float finish. Special care and considerable time is needed to produce an unformed side which resembles the finish on the front face.

The clear span of the sunshade spandrels would have been impossible to reinforce in natural stone. By combining the compressive strength of concrete with the tensile strength of steel, Cast Stone can deliver the beauty of natural stone with the structural advantages of precast concrete.

A wood-filled dovetail was cast into the seat of the sill to allow for fastening of the windows without the need to pinpoint fastener locations on the shop drawings.

Dowel holes in the bottom of the plaster panels were used in conjunction with slots cast into the tops of the sills to allow horizontal adjustment during setting.

A slight taper (draft) on the inside of the window sill lugs was needed to allow the sill to part from the production mould during casting.



This Technical Bulletin is provided by the Cast Stone Institute®, and is intended for guidance only. Specific details should be obtained from the manufacturer or supplier of the Cast Stone units.