

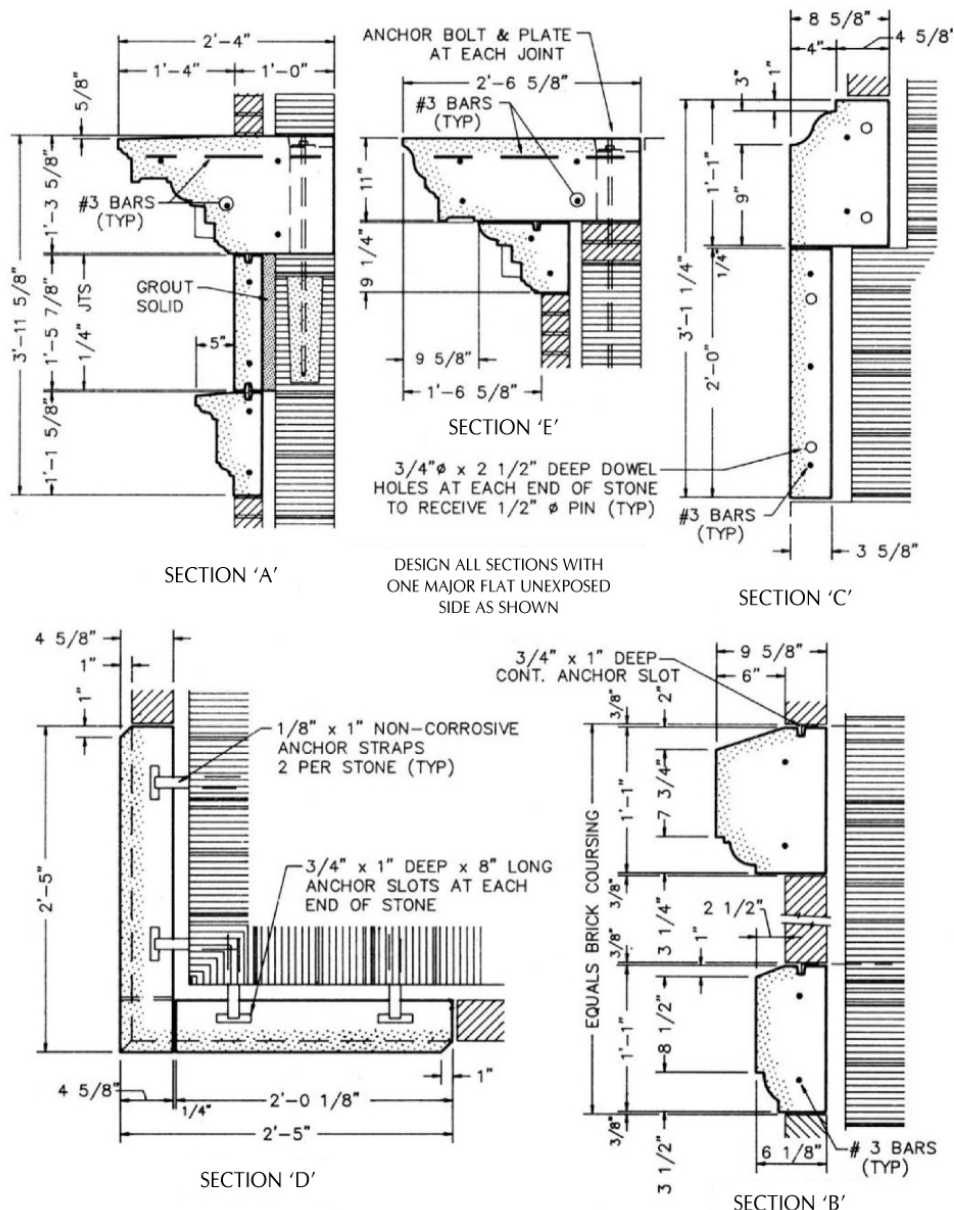
**PROJECT: PARK CITIES BAPTIST CHURCH  
ARCHITECT: F&S PARTNERS, INC.  
DALLAS, TX - PLATE #2**

The following are sections showing the cornice, watertable, architrave, belt course and quoins. Note that all sections are designed with flat backs for economy.

Bolts and plates are used to anchor cornice stones with heavy projections. Non-corrosive bent anchor bolts are grouted into the masonry bond beam and final torque applied to the bolts after setting.

This same method may be adapted to concrete structures or to a steel frame by hooking and welding the bent anchor bolt or rod under a beam flange.

Anchor straps used here are 1/8" x 1" (typically) non-corrosive metal stone anchors and may be galvanized or stainless steel, Type 302 or 304.



This Technical Bulletin is provided by the Cast Stone Institute®, and is intended for guidance only. Specific details should be obtained from the manufacturer or supplier of the Cast Stone units.