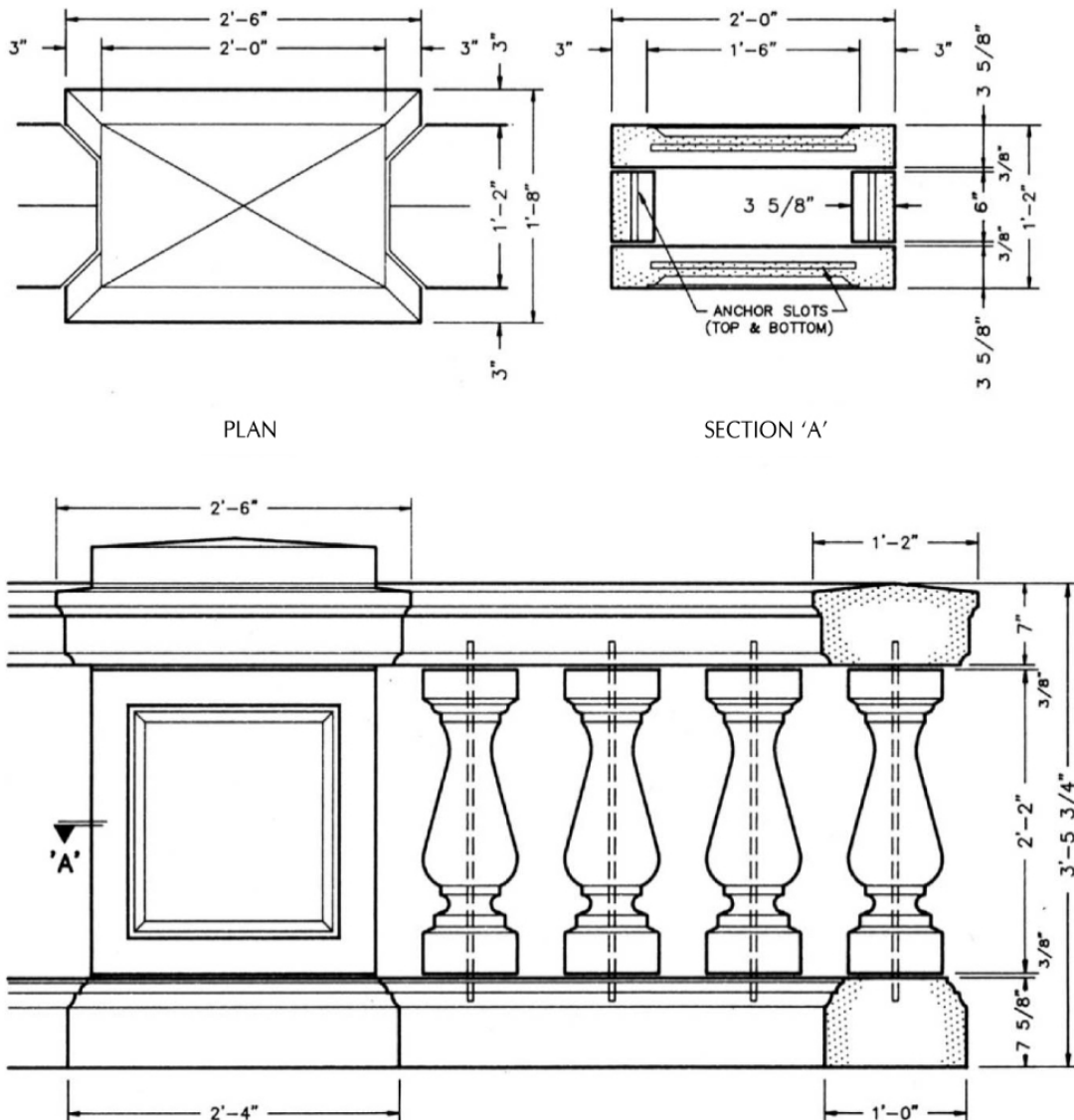


**PROJECT: EXECUTIVE HILLS BRIDGES**  
**ARCHITECT: NEARING & STAATS**  
**PLATE #10**

The Executive Hills Bridges Project is located in a highly visible and restricted residential development in Kansas City, Missouri. The developer's objective was to design a Cast Stone balustrade for the bridge which would match the traditional style and elegance of the homes within the estates. The buff limestone balustrade is visible from either side of the bridge.

The cost savings realized by the developer was substantial because the designer accomplished the entire 450 ft. balustrade using only eight different piece types.

Stainless steel dowel pins are used to anchor the post bases and bottom rail to the concrete slab for connecting the four sides' panels together and to the post base. Anchor straps are used for tying the panels together at the top and dowels are used to accomplish the balance of the connections. A 1/2" stainless steel Type 302 dowel pin fits a 3/4" x 2" dowel hole filled completely with mortar during setting (refer to specification section). A 1/2" threaded stainless steel rod runs through the baluster for doweling and reinforcement.



This Technical Bulletin is provided by the Cast Stone Institute®, and is intended for guidance only. Specific details should be obtained from the manufacturer or supplier of the Cast Stone units.